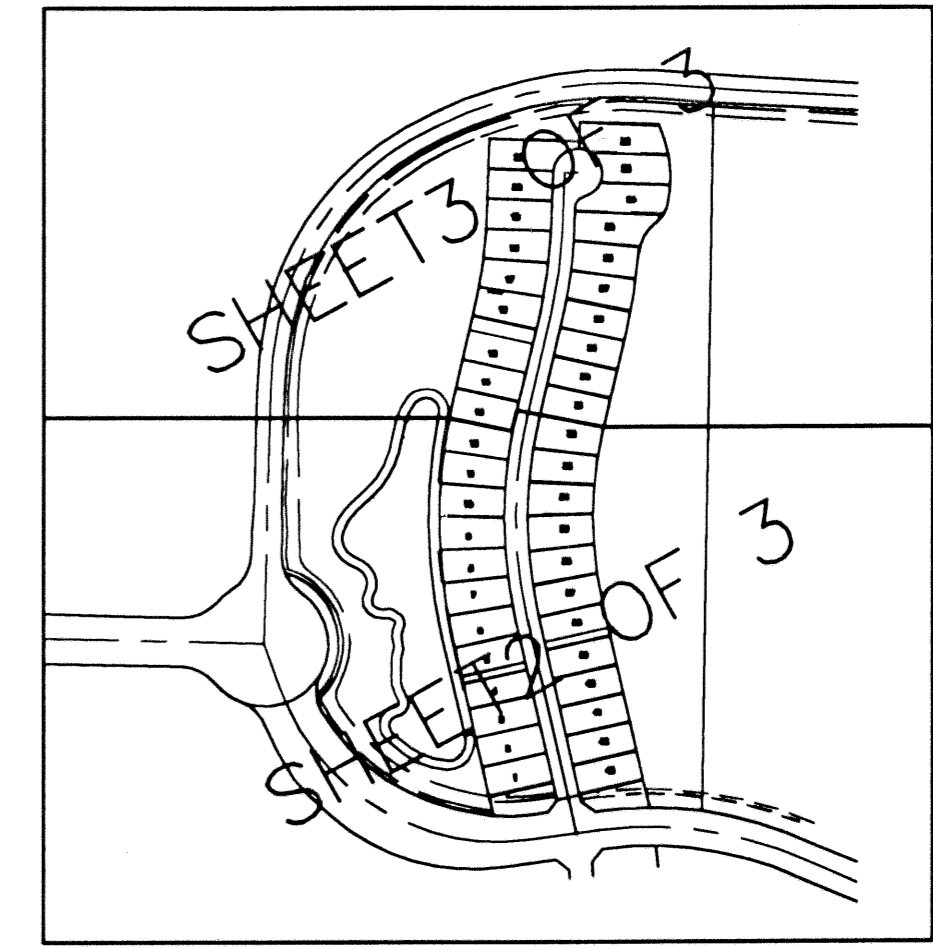


FRENCHMAN'S RESERVE PCD - PLAT "A"

BEING A REPLAT OF TRACT A, FRENCHMAN'S RESERVE PCD - PLAT ONE
AS RECORDED IN PLAT BOOK 92, PAGE 11-20,
PALM BEACH COUNTY, FLORIDA

LYING IN SECTIONS 31,
TOWNSHIP 41 SOUTH, RANGE 43 EAST, CITY OF PALM BEACH
GARDENS PALM BEACH COUNTY, FLORIDA.

NOVEMBER, 2001 SHEET 2 OF 3

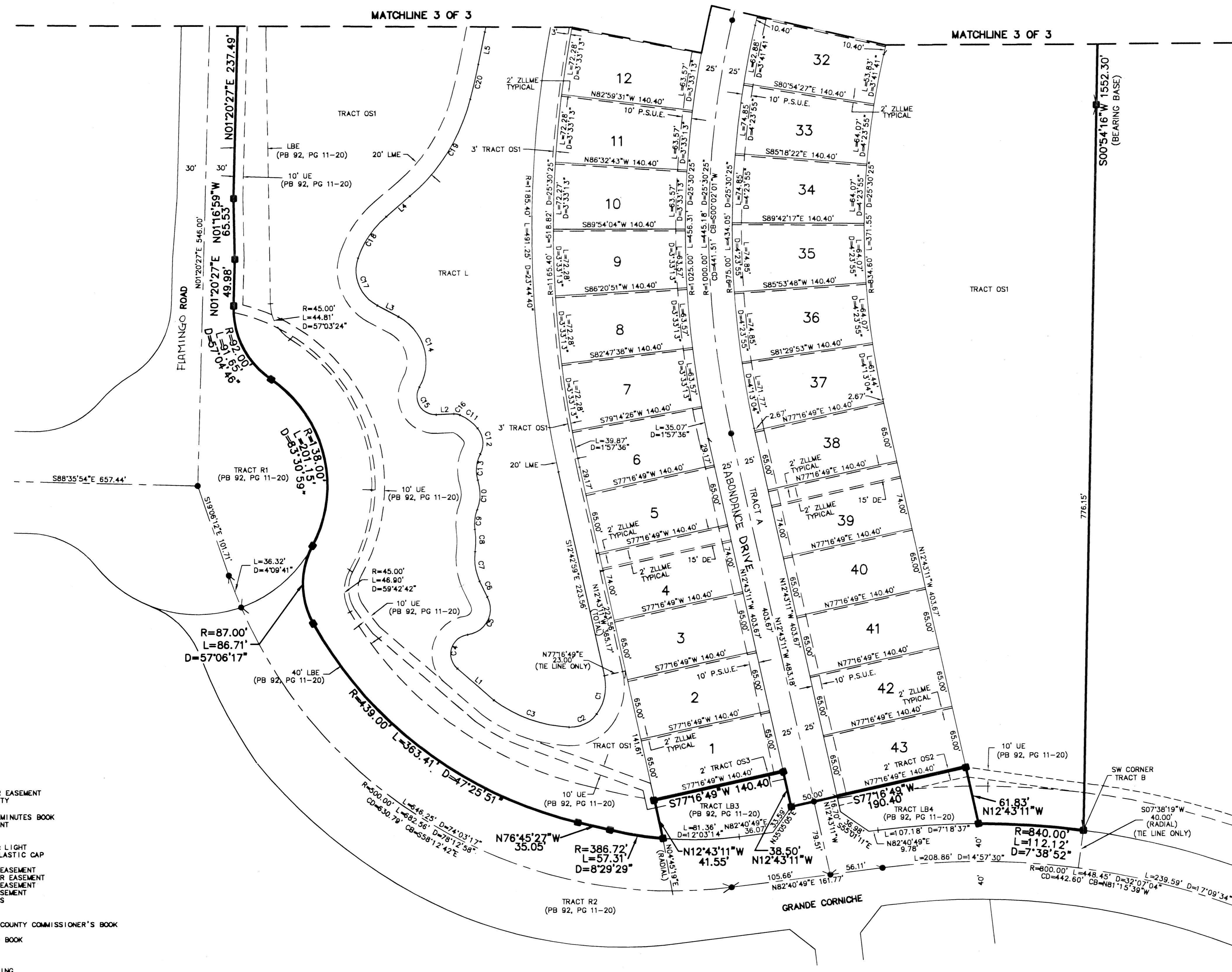
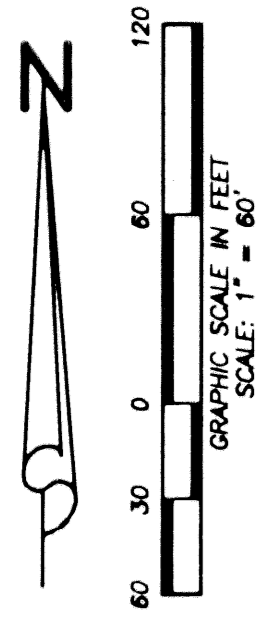


195

STATE OF FLORIDA
COUNTY OF PALM BEACH
THIS PLAT WAS FILED FOR
RECORD AT _____ M.
THIS _____ DAY OF _____
A.D. 2001 AND DULY RECORDED
IN PLAT BOOK _____ ON
PAGES _____ AND _____

DOROTHY H. WILKEN
CLERK CIRCUIT COURT

BY: _____
DEPUTY CLERK



LINE TABLE		
LINE	BEARING	LENGTH
L1	N49°24'10"W	51.21
L2	S87°18'43"W	18.75
L3	N62°21'20"W	25.57
L4	N49°05'57"E	33.50
L5	N11°21'20"E	34.86

CURVE TABLE			
CURVE	RADIUS	DELTA	LENGTH
C1	50.74	48°13'33"	42.71
C2	34.00	57°07'30"	33.90
C3	145.35	34°08'01"	86.59
C4	20.67	132°06'54"	47.66
C5	27.65	110°43'30"	53.43
C6	288.69	3°44'41"	18.87
C7	59.09	31°16'07"	32.25
C8	91.19	15°17'42"	24.34
C9	42.01	28°55'26"	21.21
C10	48.34	38°11'28"	32.22
C11	51.37	26°23'41"	23.66
C12	25.05	67°38'52"	29.58
C13	36.45	45°18'43"	28.82
C14	54.67	91°47'54"	87.59
C15	19.57	122°07'51"	41.72
C16	15.00	26°23'46"	6.91
C17	42.48	80°30'08"	59.69
C18	101.06	30°57'09"	54.60
C19	203.90	34°40'11"	123.38
C20	713.49	3°04'29"	38.29

- LEGEND:**
- CL = CENTERLINE
 - WSE = WATER AND SEWER EASEMENT
 - PBCO = PALM BEACH COUNTY
 - C = CALCULATED
 - COMB = COMMISSIONERS' MINUTES BOOK
 - DE = DRAINAGE EASEMENT
 - DB = DEED BOOK
 - FND = FOUND
 - FPL = FLORIDA POWER & LIGHT
 - IRC = IRON ROD WITH PLASTIC CAP
 - IP = IRON PIPE
 - LAE = LIMITED ACCESS EASEMENT
 - LBE = LANDSCAPE BUFFER EASEMENT
 - LME = LAKE MAINTANCE EASEMENT
 - LSE = LIFT STATION EASEMENT
 - LB = LICENSE BUSINESS
 - LS = LICENSE SURVEY
 - LS = MEASURED
 - MCCB = MINUTES OF THE COUNTY COMMISSIONER'S BOOK
 - MON = MONUMENT
 - ORB = OFFICIAL RECORD BOOK
 - (P) = PLAT
 - PB = PLAT BOOK
 - PG = PAGE
 - POB = POINT OF BEGINNING
 - POC = POINT OF COMMENCEMENT
 - PRM = PERMANENT REFERENCE MONUMENT
 - R/W = RIGHT-OF-WAY
 - RPB = ROAD PLAT BOOK
 - SUA = SEACOST UTILITY EASEMENT
 - (S) = SURVEY
 - ZLME = ZERO LOT LINE MAINTANCE EASEMENT
 - UE = UTILITY EASEMENT
 - = SET PK&DK "PERMANENT CONTROL POINT"
"LB#7055"
 - = SET 4"x4" CONCRETE MONUMENT
"LB#7055"

Wantman Group, Inc.
Engineering ♦ Surveying ♦ Mapping
901 NORTHPOINT PARKWAY, SUITE 204
WEST PALM BEACH, FL 33407
(561) 687-2220 phone (561) 687-1110 fax
CERT No. 6091 - LB No. 7055

CAD	K:\TOLLBROS\FRENCHMAN\DWG\21BPLATA		
REF	K:\TOLLBROS\FRENCHMAN\DWG\21BMG01		
FLD	RP/AB	FB. 000 PG. 00	JOB 21BA
OFF	AJP/MRJ		DATE 7/2/01
CKD	RBP	SHEET 2 OF 3	DWG